



Toce™ 2015-2021 Kawasaki Vulcan 650 Razor Tip Full Exhaust System



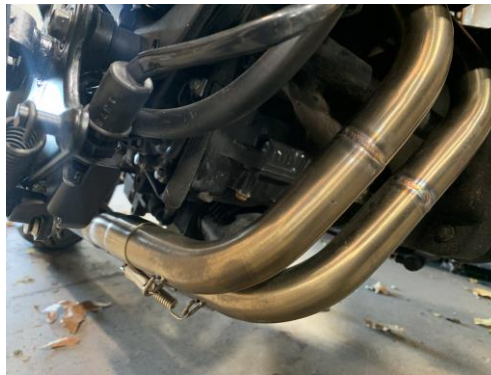
Parts List

Exhaust Canister Assembly	1
Exhaust Header Assembly	
Hardware	
T-Bolt Clamp	1
Exhaust Collector Springs	2
M8 Nut	1
M8 Fender Washer	1

ATTENTION: We strongly recommend that this product is installed by a qualified motorcycle mechanic. If you have any doubts as to your ability to perform this installation, please consult with a dealer or repair shop. Be sure to read all instructions before starting installation. Be sure the motorcycle is secure and stable throughout the entire installation.

Installation Instructions

1. Remove bolts holding factory muffler box assembly to frame and oxygen sensor.
2. Remove the 4 bolts holding the collars together on the cylinder head assembly.
3. Using the indicators on the down pipes - assemble them into the collector assembly so that the spring tabs are in alignment and install springs.



4. Mount and secure the header assembly into the cylinder head using the factory gaskets tighten loosely.



5. Install the oxygen sensor into the appropriate bung for and slid the canister + midpipe assembly onto the header.
6. Remove factory muffler mounting bolt, insert from rear and affix the supplied washer and nut to hold the canister assembly in place..



**Your Installation is complete!
Now you are ready to ride!
Thank you for your purchase!**

If you need further assistance please check out our Facebook or YouTube channel for video instructions. We hope you follow us on Instagram, like us on Facebook or leave a review: we would love to hear your feedback.

Warranty

Toce Brothers Performance products are intended for closed course competition and show use only, and therefore are sold "as is" without warranty. Toce Brothers Performance, LLC specifically disclaims any warranties of merchantability or fitness for a particular purpose and disclaims all responsibility for consequential and incidental damages or any other losses arising from the use of these products.